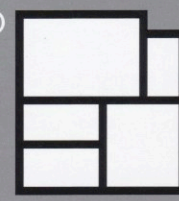


BUTTERFIELD[®] COLOR



A SIKA BRAND

Perma-Cast[®]

Antiquing Release

Select Grade[®]

Antiquing Release

Perma-Tique[®]

Antiquing Agent

Please indicate when ordering

- Perma-Cast[®] Antiquing Release: **R#**
- Select Grade[®] Antiquing Release: **SGR#**
- Perma-Tique[®] Antiquing Agent: **PT#**



R12/SGR12/PT12 Storm Gray



R13/SGR13/PT13 Deep Charcoal



R23/SGR23/PT23 Smoke



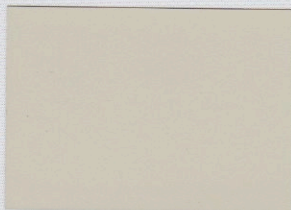
R18/SGR18/PT18 Chestnut



R28/SGR28/PT28 Slate Gray



R26/SGR26/PT26 Cape Cod Gray



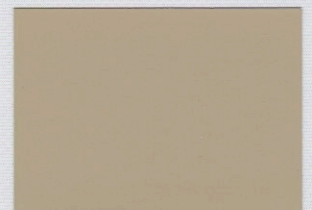
R32/SGR32/PT32 Bone



R24/SGR24/PT24 French Cream



R29/SGR29/PT29 Wheat



R22/SGR22/PT22 Arena Buff



R25/SGR25/PT25 Colina Tan



R14/SGR14/PT14 Walnut



R19/SGR19/PT19 Russet



R15/SGR15/PT15 Brick Red

Many things can affect the appearance of color. For best color matching results, a representative job site sample should be cast using materials and finishing techniques that will be used on the project.

Colors shown on this chart represent the color of the release powder. When the release powder is applied to colored concrete and stamped, the two colors will combine and create variations of color. The amount of release color retained after washing will also vary depending on the condition of the concrete when it was stamped.

Perma-Cast[®]

Select Grade[®]

Antiquing Release

Antiquing Release

Description: Perma-Cast[®] Antiquing Release and Select Grade[®] Antiquing Release are colored powder bond breakers used with stamping mats, texturing skins and texture rollers. The products provide accent colors that complement or contrast with the underlying concrete surface. Additionally, they enhance the transfer of the detailed pattern and texture, and prolong the surface life of the stamping mat or texturing tool. They are compatible with integrally colored concrete, color hardened concrete and stampable cementitious overlays. Perma-Cast[®] Antiquing Release and Select Grade[®] Antiquing Release are finely ground, streak free powders that are a blend of UV-resistant pigments and water repelling additives. Broadcast Perma-Cast[®] Antiquing Release or Select Grade[®] Antiquing Release over the concrete surface prior to placing the stamping or texturing tools. As the imprinting tool is pressed into the plastic concrete surface, a portion of the antiquing release is embedded into the textured surface of the concrete. When the tool is removed, it breaks cleanly, without marring the colored concrete surface. Upon washing and sealing, the difference in color between the base concrete and the release creates a visually attractive antiqued look on the concrete. The added color visually enhances the depth of the texture. The amount of release agent retained on the concrete will vary. Use a Perma-Cast[®] Antiquing Release or Select Grade[®] Antiquing Release color that matches or contrasts with the concrete color. Add a combination of colors to create interesting shading and highlights on the finished concrete surface. Perma-Cast[®] Antiquing Release is available in 14 standard colors (R#), as well as colors selected from the Perma-Shake[®] Color Hardener color chart. The release colors formulated from Perma-Shake[®] Color Hardener colors will not be an exact match to concrete colored with those shake-on colors. Custom colors and color matching are available with ample lead-time, without upcharges or minimums.

Select Grade[®] Antiquing Release is only available in 14 standard colors (SGR#). Custom colors and color matching are not available.

Limitations: Do not use Perma-Cast[®] Antiquing Release and Select Grade[®] Antiquing Release on the same installation. Unacceptable color and texture variations may occur. Do not use Perma-Cast[®] Antiquing Release or Select Grade[®] Antiquing Release as the primary coloring agent. Do not trowel or float the concrete surface after the release powder is applied. Do not use as a curing compound. Perma-Cast[®] Antiquing Release and Select Grade[®] Antiquing Release will produce variegated colors and is a function of concrete mix design, timing, method of application and removal, method of imprinting, and weather. Avoid over application, which may minimize the depth of texture. Cover and protect adjacent surfaces from contamination during application and residue removal. Consider using Perma-Cast[®] Clear Liquid Release if contamination is a concern, particularly on interior applications or when imprinting cementitious overlays. Perma-Cast[®] Antiquing Release and Select Grade[®] Antiquing Release are retained on the surface by a mechanical bond. A sealer application is required to enhance the longevity of the antiqued coloration. **Packaging:** Perma-Cast[®] Antiquing Release and Select Grade[®] Antiquing Release are packaged in plastic pails. Shelf life is indefinite when stored in original, unopened containers, in dry storage. **Coverage:** Perma-Cast[®] Antiquing Release: Approximately 1,000-1,200 sq. ft. (93-111 m²) per 30 lb. (13.6 kg) pail, Select Grade[®] Antiquing Release: Approximately 750-1,000 sq. ft. (70-93 m²) per 30 lb. (13.6 kg) pail. **Quality Control:** Cast a job site sample at least 21 days prior to the installation for approval of color and finish. Utilize all materials, tools, and techniques from the actual job in the mock-up. Consistent batching, pouring, finishing, curing, sealing, and preparation techniques, will ensure the uniformity of architectural concrete. Verify adequate wet and dry slip resistance. Verify maintenance requirements. Site visits by Butterfield Color, Inc. Personnel are for making technical recommendations only and not for supervising or providing quality control.

Perma-Tique[®]

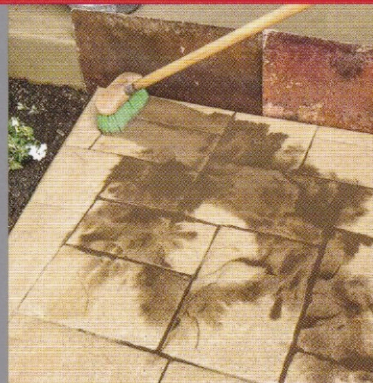
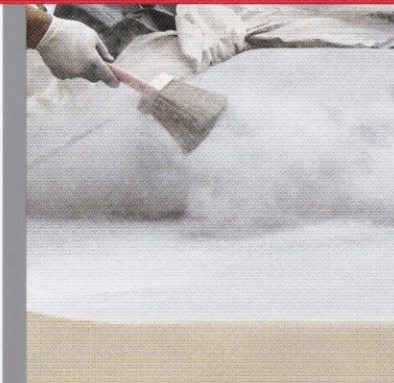
Antiquing Agent

Perma-Tique[®] Antiquing Agent: Perma-Tique[®] Antiquing Agent is used to antique unsealed hardened textured concrete and unsealed overlaid textured surfaces. Perma-Tique[®] Antiquing Agent mixes with water and is applied to the concrete surface to add a natural antiquing color to newly textured concrete, overlays or old weathered textured surfaces.

FOR PROFESSIONAL USE ONLY. Prior to use of any Butterfield Color, Inc. product, the user must always read and follow the warnings and instructions on the product's most current Technical Data Sheet, product label and Safety Data Sheet which are available online at www.butterfieldcolor.com or at 800-282-3388. Nothing contained in any Butterfield Color, Inc. materials relieves the user of the obligation to read and follow the warnings and instruction for each Butterfield Color, Inc. product as set forth in the current Technical Data Sheet, product label and Safety Data Sheet prior to product use.

LIMITED WARRANTY AND DISCLAIMER – EXCLUSIVE REMEDY: Butterfield Color, Inc. ("BC") warrants that this product conforms to its published specifications when it is shipped. THIS LIMITED WARRANTY IS THE EXCLUSIVE WARRANTY AND THERE ARE NO OTHER WARRANTIES, EXPRESSED OR IMPLIED, INCLUDING IMPLIED WARRANTIES OF MERCHANTABILITY OR FITNESS FOR A PARTICULAR PURPOSE. BC does not warrant any particular method of use or application of the product or its performance under any particular condition. If this product does not conform to its published specifications when shipped, we will replace the product as your exclusive remedy. Any action for breach of the limited warranty or any other liability arising from this product must be brought within 90 days of receiving the product. BC is not liable for consequential damages or personal injury arising from the use, storage or handling of this product.

Distributed by:



1 BAG PER 2 YARDS

1 BAG PER 1 YARD

2 BAGS PER 1 YARD

3 BAGS PER 1 YARD



SG01 Brown



Earth Brown



Toasted Brown



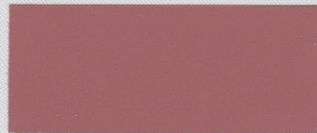
Chinchilla Brown



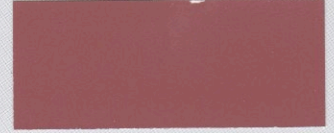
SG02 Coral



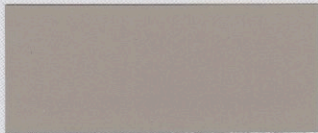
Red Coral



Crimson Coral



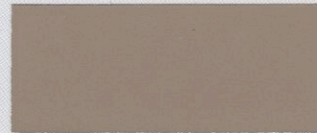
Fiery Coral



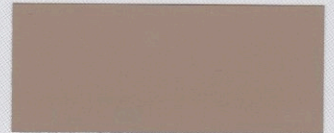
SG03 Stone



River Stone



Quartz Stone



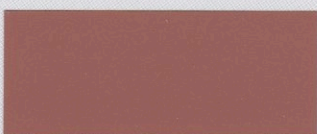
Cliff Stone



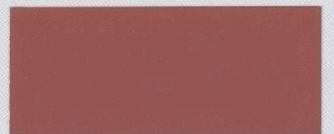
SG04 Clay



Arid Clay



Baked Clay



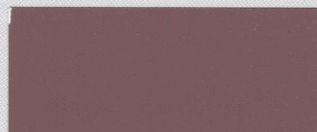
Utah Clay



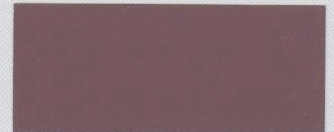
SG05 Bark



Wisteria Bark



Hickory Bark



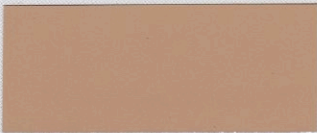
Mahogany Bark



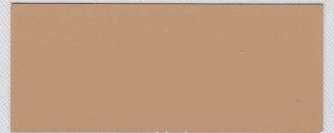
SG06 Buff



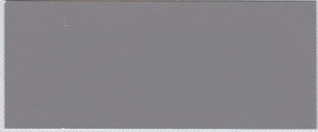
Honey Buff



Golden Buff



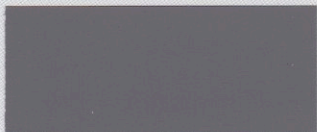
Mustard Buff



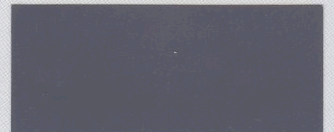
SG07 Gray



Gauntlet Gray



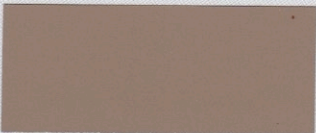
Fox Gray



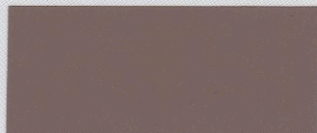
Hematite Gray



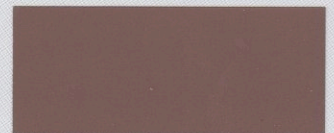
SG09 Taupe



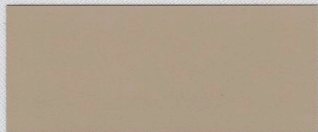
Burnished Taupe



Walnut Taupe



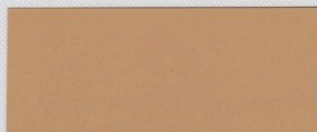
Dark Taupe



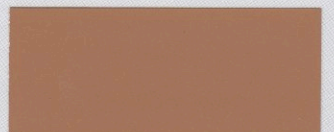
SG10 Thyme



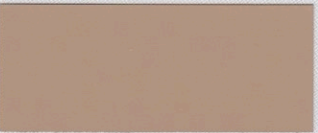
Amber Thyme



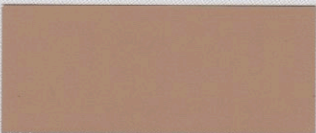
Horizon Thyme



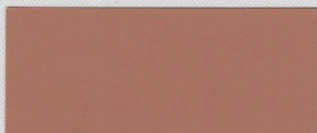
Rusted Thyme



SG11 Adobe



Adobe Tan



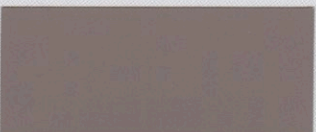
Fired Adobe



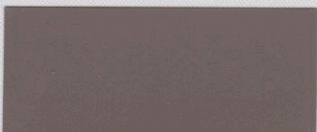
Raw Adobe



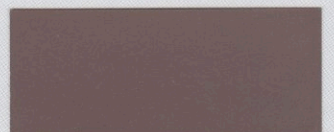
SG12 Drift



Driftwood Select



African Driftwood



Charred Driftwood

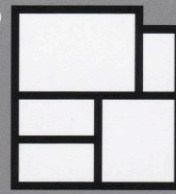
Many things can affect the appearance of color. For best color matching results, a representative job site sample should be cast using materials and finishing techniques that will be used on the project.

9 FINISHES

3 CONCRETE

Colors shown on this chart represent formulations using medium gray cement and sealed with solvent-based Clear Guard® Cure and Seal. Variations can be expected due to differences in cement, aggregates and method of application. NOTE: When using lower color loadings, such as one bag per two yards, the color of the cement and sand have a more pronounced influence on the final color resulting in a greater chance of color variation.

BUTTERFIELD[®] COLOR



A SIKA BRAND

The Butterfield Color[®] Advantage

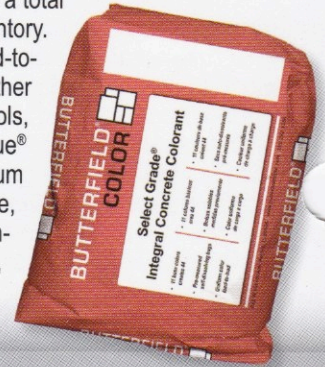
Color is an integral part of what we see every day. From the subtle earth tones of sand, wheat, and sage, to the bright colors of a sunset or mountain range, combinations of colors can be used to set the mood and theme. Color decisions are made with two factors in mind – specific design needs and how well the color will endure year after year. Color and durability are the very essence of Butterfield Color[®]. With over 40 years of field experience in architectural colored concrete, we offer a line of concrete color additives that are technically superior and meet the needs of the architectural specifier as well as the concrete finisher.

MasterFormat[™] Guide Specifications, and Butterfield Color[®] Architectural Details and Specifications are available for the specifier/designer. All information is available for download online at www.butterfieldcolor.com or at 800-282-3388.

Select Grade[®]

Integral Concrete Colorant

Product Description: Select Grade[®] Integral Concrete Colorant is an economical pre-measured pigment for integrally coloring ready mixed concrete and all manufactured concrete products during batching. Select Grade[®] Integral Concrete Colorant is suitable for integrally colored concrete projects of all types: interior floors and exterior hardscapes, as well as, precast, tilt-up and cast-in-place applications. Conforming to ASTM Standard C979 (standard specification for pigments for integrally colored concrete), it is a blend of non-fading, synthetic iron oxides. Select Grade[®] Integral Concrete Colorant is available in 11 standard base colors. By varying the dose rate (bags/cubic yard), each base color can produce 4 different colors for a total of 44 colors. Select Grade[®] integral colors produce a broad range of popular earth tone colors without an extensive inventory. Superior quality control during manufacturing and packaging help to ensure your jobs will have uniform color from load-to-load. For truly unique and creative concrete installations, Select Grade[®] Integral Concrete Colorant can be used with other Butterfield Color[®] products: Perma-Shake[®] Color Hardener, Sierra Stain[®] Reactive Acid Stain, Perma-Cast[®] Stamping Tools, Perma-Cast[®] Antiquing Release, Perma-Cast[®] Clear Liquid Release, Select Grade[®] Antiquing Release and Perma-Tique[®] Antiquing Agent. **Limitations:** The Select Grade[®] Integral Concrete Colorant color chart approximates colors using medium gray cement and sealed with solvent-based Clear Guard[®] Cure and Seal. Local materials, finishing techniques, texture, and method of curing and sealing will affect the final color. Utilize the same slump, cement, sand, and aggregates throughout project. Any deviations will affect the final color. When a base color is used at its lowest dose rate, 1 bag/2 cubic yards, mix design variations may produce obvious color variations.



- 11 base colors creates 44
- Pre-measured self-dissolving bags
- Uniform color load-to-load
- Reduces inventory

FOR PROFESSIONAL USE ONLY. Prior to use of any Butterfield Color, Inc. product, the user must always read and follow the warnings and instructions on the product's most current Technical Data Sheet, product label and Safety Data Sheet which are available online at www.butterfieldcolor.com or at 800-282-3388. Nothing contained in any Butterfield Color, Inc. materials relieves the user of the obligation to read and follow the warnings and instruction for each Butterfield Color, Inc. product as set forth in the current Technical Data Sheet, product label and Safety Data Sheet prior to product use.

LIMITED WARRANTY AND DISCLAIMER – EXCLUSIVE REMEDY: Butterfield Color, Inc. ("BC") warrants that this product conforms to its published specifications when it is shipped. THIS LIMITED WARRANTY IS THE EXCLUSIVE WARRANTY AND THERE ARE NO OTHER WARRANTIES, EXPRESSED OR IMPLIED, INCLUDING IMPLIED WARRANTIES OF MERCHANTABILITY OR FITNESS FOR A PARTICULAR PURPOSE. BC does not warrant any particular method of use or application of the product or its performance under any particular condition. If this product does not conform to its published specifications when shipped, we will replace the product as your exclusive remedy. Any action for breach of the limited warranty or any other liability arising from this product must be brought within 90 days of receiving the product. BC is not liable for consequential damages or personal injury arising from the use, storage or handling of this product.

625 W Illinois Ave, Aurora, IL 60506 | www.butterfieldcolor.com | 800.282.3388

© 2020 Butterfield Color, Inc. All rights reserved. | 11068 | LN11061 | 10.1309.2

Distributed by:

